
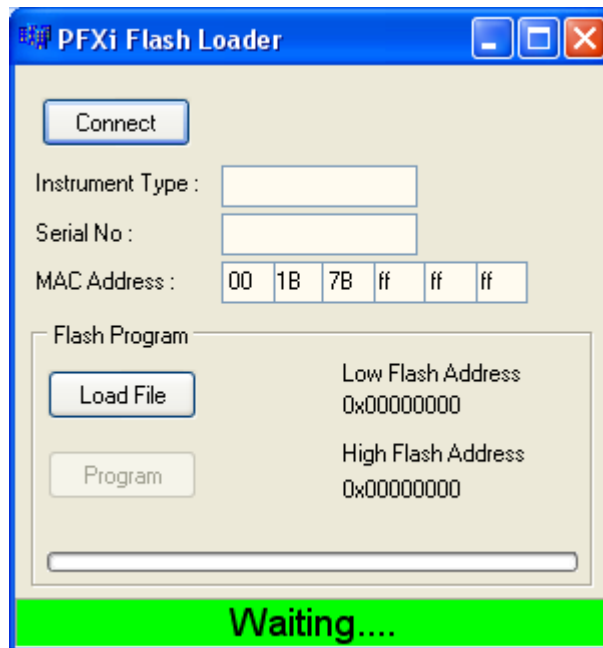


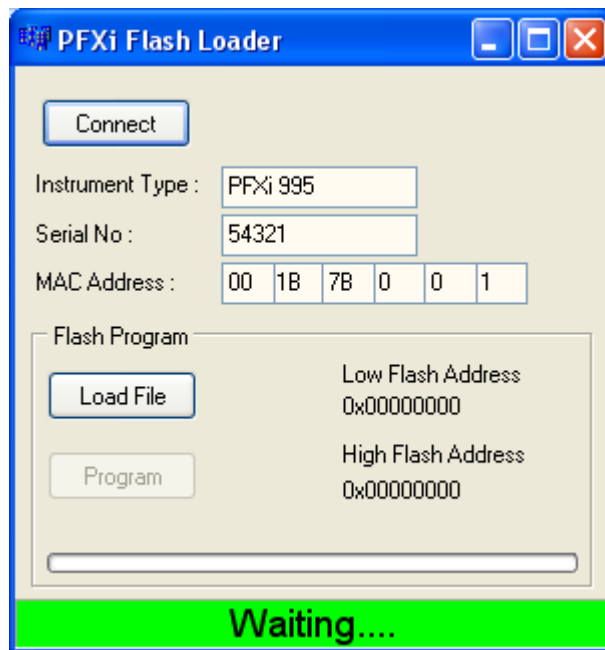
The procedure for upgrading the PFXi firmware to V4.70 is as follows:

1. Connect the PFXi to the source computer (laptop or PC) via USB.
2. Switch on the PFXi whilst holding down the 'F1' on the instrument. A dialog will appear on the LCD screen with the text 'Enter Function No'
3. Enter '8192' and press  on the instrument keypad. The 'Firmware Upgrade' screen will appear with the message 'Waiting For Host....'
4. Start the PFXi Flash loader software on the PC :

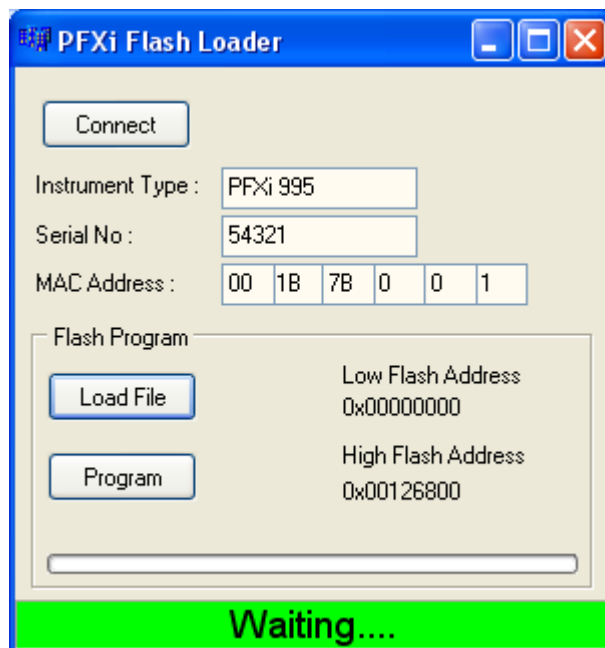


The green status bar indicates that the software is successfully communicating with the instrument.

- Click on the 'Connect' button and confirm the instrument type and serial number are correct.



- Click on the 'Load File' button and navigate to the new flash file ("PFXi_4_70.flash"). The file will take a few seconds to load. When the file has loaded correctly the 'Program' button will be enabled and the 'high' address of the firmware displayed (this is for information only):

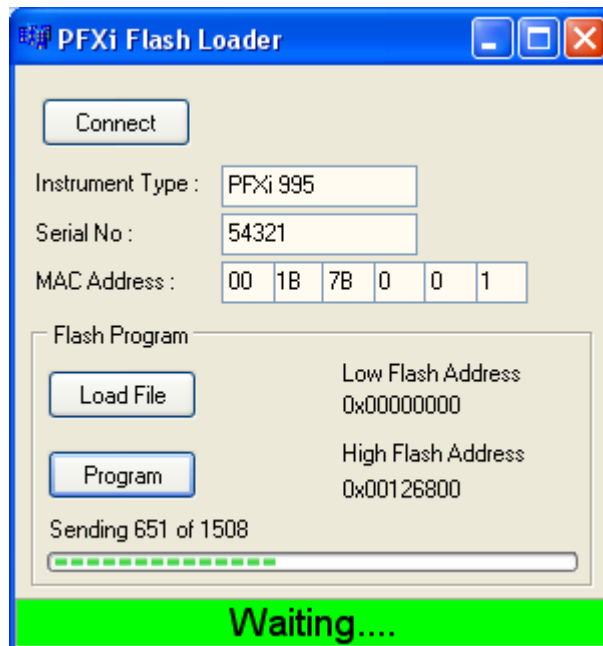


- Click on the 'Program' button. The new firmware is then downloaded and programmed into the instrument.

VIP NOTE:

DO NOT switch off or press any buttons on the instrument or the Flash Loader software until programming is complete. Failure to do so may render the instrument inoperable.

- The Flash Loader software will indicate progress and instrument state during programming:



- When programming is complete, the LCD screen will display 'Restart Instrument Update Successful' – Turn off instrument power and restart. Confirm that the software version is correct on the instrument splash screen (it should be V4.70).
- Repeat the whole process from step 1 selecting "PFXiFlashMapVerX1.flash" as the flash file.**